

February 2010



The Palette

Tracy Art League
PO Box 519
Tracy, CA 95376

TAL Board of Directors

Debby Ortega
President
836-5842

Lynn Petz
Vice President
Newsletter
815-8737

Mark Knize
Secretary
835-9588

Leona Willis
Treasurer
835-1228

Natalie Chambliss
832-9443

Rose Miller
835-2865

Abhilasha Natarajan
834-1511

Sandy Sinwald
836-1369

President's Message *By Debby Ortega*

Best wishes for a happy and prosperous new year! I hope everyone had a joyous holiday and is ready to begin a new year filled with great presentations at the general meetings.

At the March 11th general meeting we will be requesting volunteers for the Scholarship Committee. Committee members will review art and award scholarships to graduating seniors who will be pursuing a degree in the visual arts.

The TAL board has a volunteer opportunity available for a director with a term ending in October 2010. If you are interested in serving please contact me.

We look forward to seeing you this spring and at Expressions!

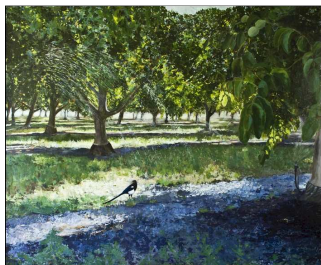
Expressions Exhibit of Fine Art

The 19th annual Expressions Exhibit of Fine Art is coming in February! Receiving dates will be Friday, February 12th between 5 pm and 8 pm; and on Saturday, February 13th between 10 am and 5 pm. The Artist's Reception will be Friday, February 19th. The exhibit is open to the public February 14 – February 20, 2009.

EXPRESSIONS supports the Tracy Art League's scholarship program for graduating seniors pursuing a degree in the visual arts. In addition, the EXPRESSIONS Children's Tour, which runs concurrently with the public exhibit, exposes 3,000 school children to the power of art each year. Nearly 40,000 children from kindergarten through high school have participated in the enrichment curriculum for the past 18 years.

Marge Snider is coordinating volunteers who can donate their time to help with various jobs such as receiving, set-up and tear-down, pick-up, and docents for the hours the exhibit is open to the public. If you can volunteer please contact Marge at 835-8285.

Kim Powell coordinates this monumental task for the Tracy Unified School District and the Tracy Art League. Thanks to a grant from the United Way, students will be bused to the Community Center for 45-minute tours of the art exhibit. Tours are given by artists that are members of the art league. Due to the efforts of these organizations and individuals, students will receive an opportunity for art appreciation, as well as using critical thinking skills.



Painting by Gayle Knize

Tracy Art League Polo Shirts are available. They are a heavyweight blend of 50% cotton / 50% polyester in royal blue with TAL/Tracy Art League on the left side. Sizes available are large, med., and small. Price: \$20 to \$30 Per Shirt
Contact Debby Ortega at 836-5842



Sculpture by Mark Knize

Tracy Art League Meetings

TAL meets September through May. **The TAL board does not meet in February and there is no general meeting in February due to Expressions.** We look forward to meeting you at Expressions and our monthly General Meetings—the 2nd Thursday of each month—and at special events.

Board Meeting March 4 7:00 p.m.

At the Arts Leadership Alliance Office, 1017 A Street, Suite 2, Tracy

General Meeting March 11 7:00 p.m.

Lolly Hansen Senior Center, 375 9th Street, Tracy
Guest demonstrator is to be announced

Board Meeting April 1 7:00 p.m.

At the Arts Leadership Alliance Office, 1017 A Street, Suite 2, Tracy

General Meeting April 8 7:00 p.m.

Tracy Community Center, 300 East 10th Street, Tracy
Guest demonstrator will be Abhilasha Natarajan

Board Meeting May 6 7:00 p.m.

At the Arts Leadership Alliance Office, 1017 A Street, Suite 2, Tracy

General Meeting May 13 7:00 p.m.

Tracy Community Center, 300 East 10th Street, Tracy
Featuring the work of the Tracy Art League graduating high school scholarship recipients.

Membership Information

Membership year for TAL runs from January 1 - December 31 of each year. You must renew by March 31st in order to stay on the Palette mailing list.

Membership Fees:

Couples \$50
Individual \$35
Students \$15
Seniors \$15

Mailing address:

Tracy Art League
PO Box 519
Tracy, CA 95378

Tracy Art League Website

We have a website at www.tracyartleague.com. Mark Knize does a great job maintaining and updating it. It's a good source of information and a way to stay in contact with other artists in our area. There are phone numbers listed if you have any questions concerning the art league, or if you would like to add anything.

TAL Artists Chosen for Tracy Transit Station

At 3:30 pm on Monday, February 1st, officials will open the new Tracy Transit Station, with a ribbon cutting ceremony, tours of the building, and a reception. The public can tour the building, and there will be finger food and music. The building has sculptures and artwork by local artists from the Tracy area.

Frank Cameron's metal relief sculpture of a steam train, measuring 4 feet wide by 5 feet high, is located in the south side at eye level in the main hall, outside of the conference rooms. It is made of steel and he placed an operational headlamp on top that can be activated with a momentary switch. He says that it was quite challenging.

Mark Knize, along with Modesto's Steve Mudge, teamed up to make two large metal wall sculptures for the Transit Station's lobby, which are two large trains, one historic steam train, and one modern locomotive train. They are 16 feet long and 4 feet tall.



Sculpture by Mark Knize
& Steve Mudge

Expressions 2010 Juror

The juror for EXPRESSIONS 2010 is Kimiko Azama. Ms. Azama is currently in her 18th year of teaching art for Tracy Unified School District. She had the opportunity to contribute to the Art & Design Program at West High School since it opened its doors in 1993, and currently has made a move to the new Kimball High School to teach art.

The medium that Kimiko works in is called monotype--a one of a kind piece of artwork. It is one of the simplest forms of printmaking in which paint is applied to a Plexiglas plate and then the print "pulled" after being run through a press.

Artists that would like a photo of their work on the Tracy Art League Web Site

(www.tracyartleague.com), send a suitable photo and title to Mark Knize by email:

mknize@caldsl.net

New to Expressions in 2010

New to Expressions this year is **Expressions! Selections**. Expressions! Selections will feature honored works entered into the Expressions! Exhibition. William Wilson, Gallery Supervisor at the Center, will curate a selection of works for special recognition in a feature exhibition in the Grand Galleries from March 13 through May 1st, 2010. The Opening Reception is scheduled for Saturday, March 13th from 6 to 8 PM. A Gallery Talk with Mr. Wilson and guest artists is scheduled for Saturday, April 3rd from 1 to 3 PM.

All events are free and open to the public.



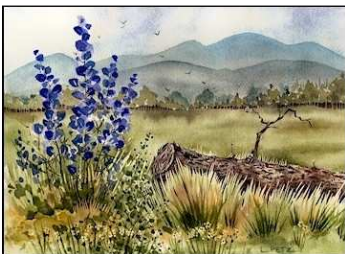
Sculpture by Frank Cameron



Monotype by Kimiko Azama



Watercolor by Pam Wilhelm



Watercolor by Lynn Petz

Upcoming Shows

Expressions! Annual Exhibit of Fine Arts Show in Tracy. Receiving Feb 12 and 13 www.tracyartleague.org Show runs from Feb.19-27

28th Annual Spring Juried Show, Turlock City Arts Commission at Turlock City Hall. Receiving Feb 26 and 27, show runs Mar 8 to may 25. TCAC301 Starr Ave Turlock, CA 05380

50th Spring Art Annual at Woodbridge Winery sponsored by Lodi Art League, receiving Mar 5 and 6, show runs Mar 19, 20 and 21, 209-333-3855 www.lodiartcenter.org

Ironstone Vineyard 13th Annual Spring Obsession Art Competition and Sale, Theme division jpeg due Jan 8, show ends May 2, 2010. Open division jpegs due Feb 5, show runs Mar 6 to May 2, www.ironstonevineyards.com

Art on the Square, Lodi's 8th Annual Art, Music and Wine Festival. This Event is judged and juried. It is located at Hutchins Street Square in Lodi, CA. The event is on June 25 and 26, www.visitlodi.com

Sebastopol Center for the Arts, Still Life Juried Exhibition, March 25-May 2, 2010. For additional information contact SCA 707-829-4797; or email satrip@sonic.net, or go to www.sebarts.org

Upcoming Events

The "Birth of Impressionism "is coming to the De Young Museum on May 22-Sept 6. Vince Walsh is getting a group together to see this show. Anyone interested please call him at 836-3012.

Classes & Workshops

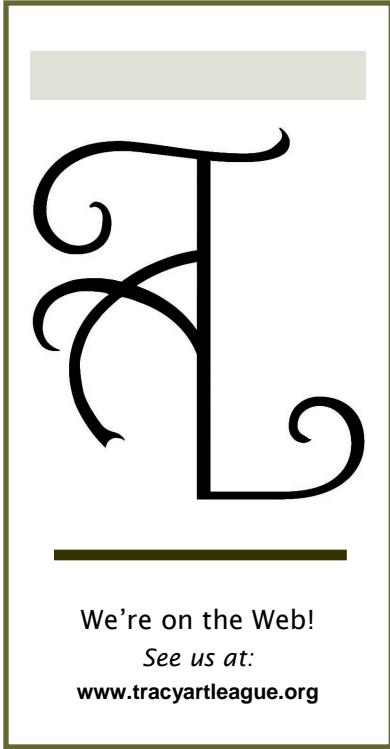
Pastel Workshop Offered By Tina Moore

A three-day Pastel Workshop will be offered by award-winning artist Tina Moore at the Elsie May Goodwin Gallery beginning in March. For details, contact Tina at mooregrafix@comcast.net or via phone at 209-931-2529.

This workshop will take place the third Sunday, from 10:00am-5:00pm each month (March, April, & May 2010), at the Elsie May Goodwin Gallery in Stockton. The intervals between classes will allow students to inculcate new skills learned prior to the next class. The series is offered for \$135.00, and the class capacity will be 11 students. Space permitting, artists might be able to attend on a per class basis at \$45 per day, although priority will be given to those who register for the entire series. A \$45 non-refundable deposit will be required for registration starting Feb. 1st, which can be mailed to Tina Moore at 5045 Foppiano Lane, Stockton, CA 95212.

Classes at the Grand Theatre Center for the Arts

Check the schedule for the list of classes in 2010



The Tracy Art League (TAL) is a non-profit organization with its roots deep in the community.

Chartered in 1980, its mission is to promote and preserve the visual arts as an enhancement to community life, to encourage artists in their individual work, and to provide educational opportunities in the arts for both adults and children.

Its membership includes working artists, individuals and groups whose interest is in supporting the arts in Tracy.

The arts benefit our city culturally, educationally, and economically. The Tracy Art League is an active participant in the effort to make our community a better place to live.



THE PALETTE

Tracy Art League
PO Box 519
Tracy, CA 95378